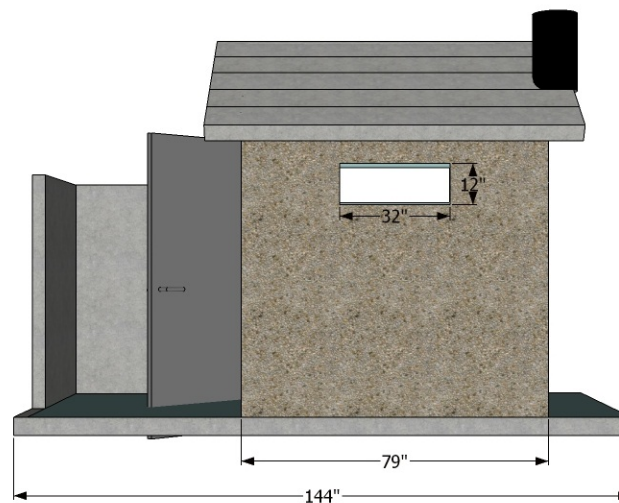


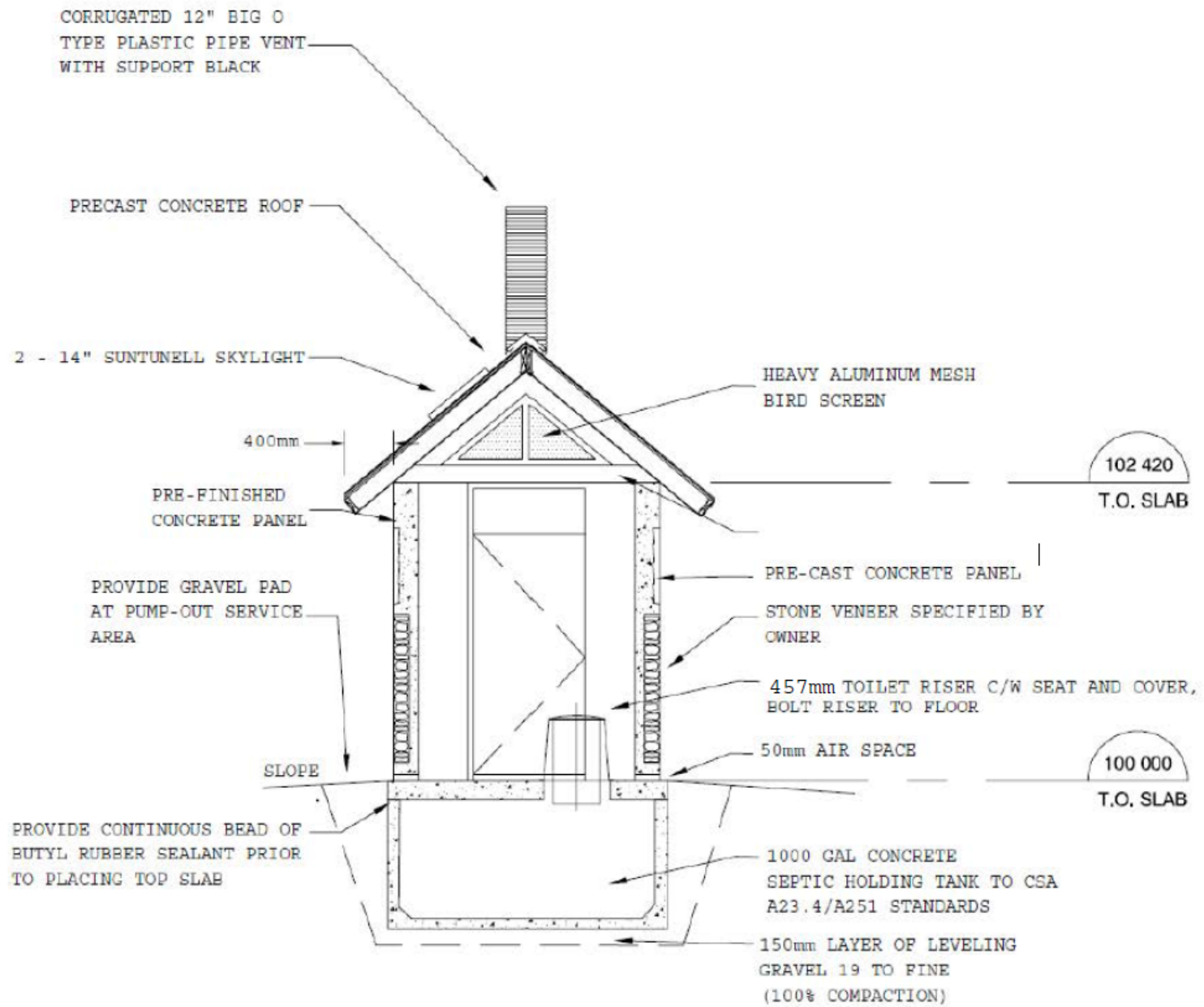
FRONT

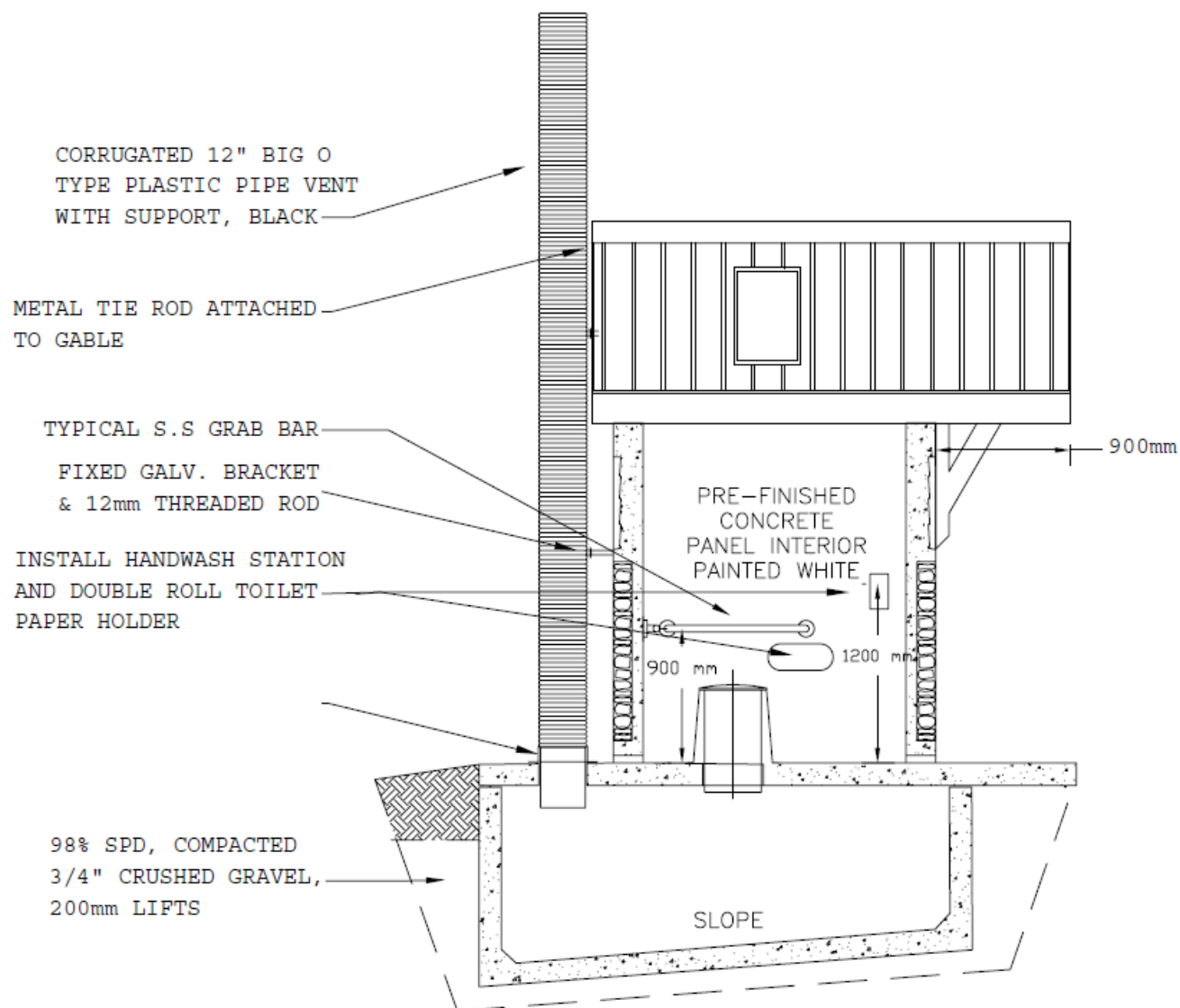


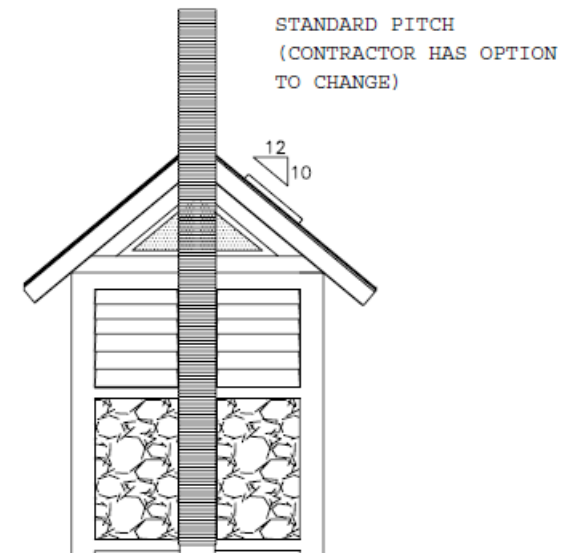
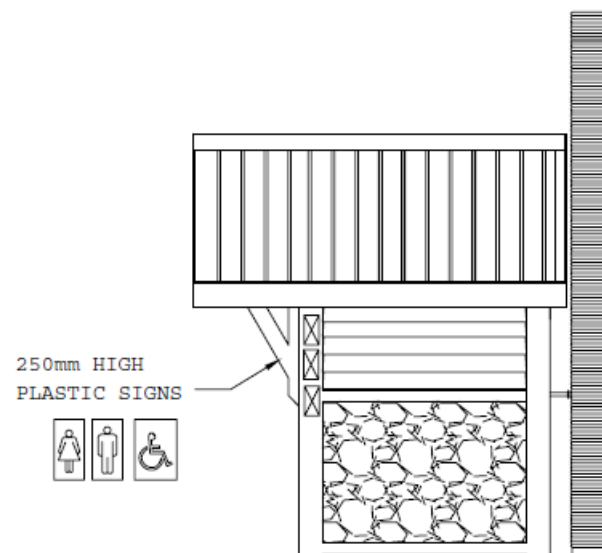
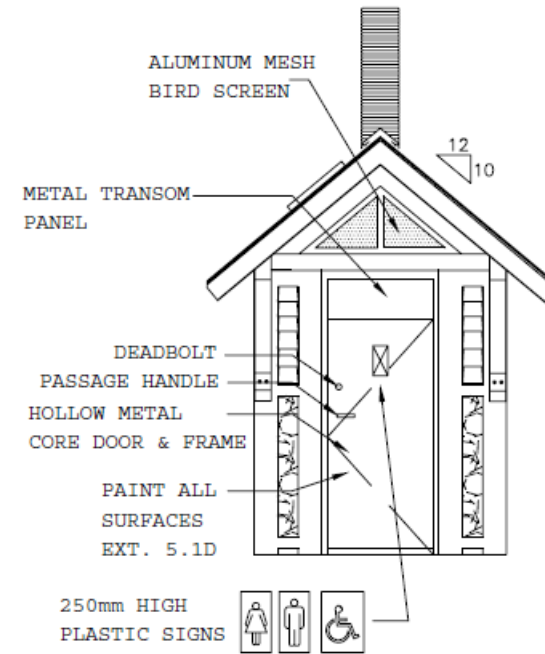
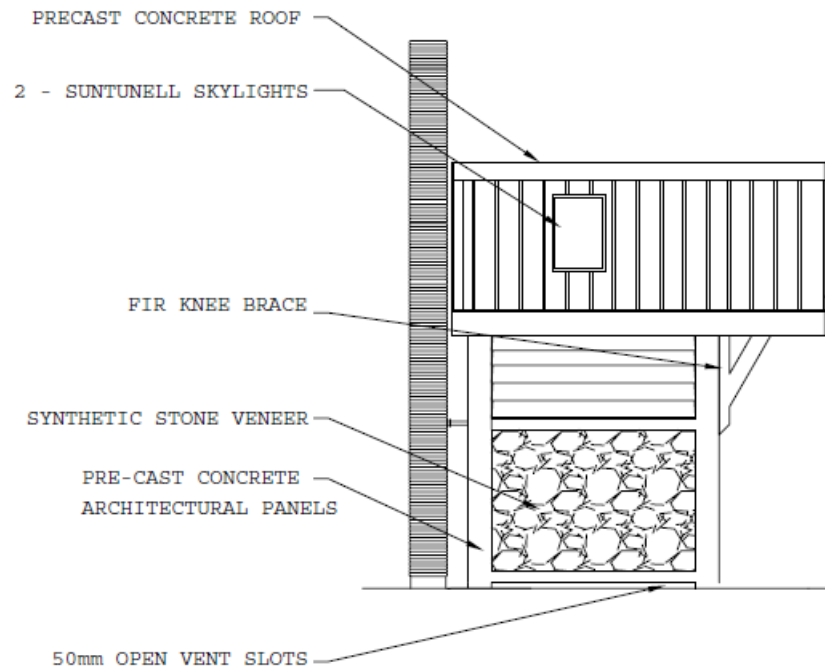
SIDE

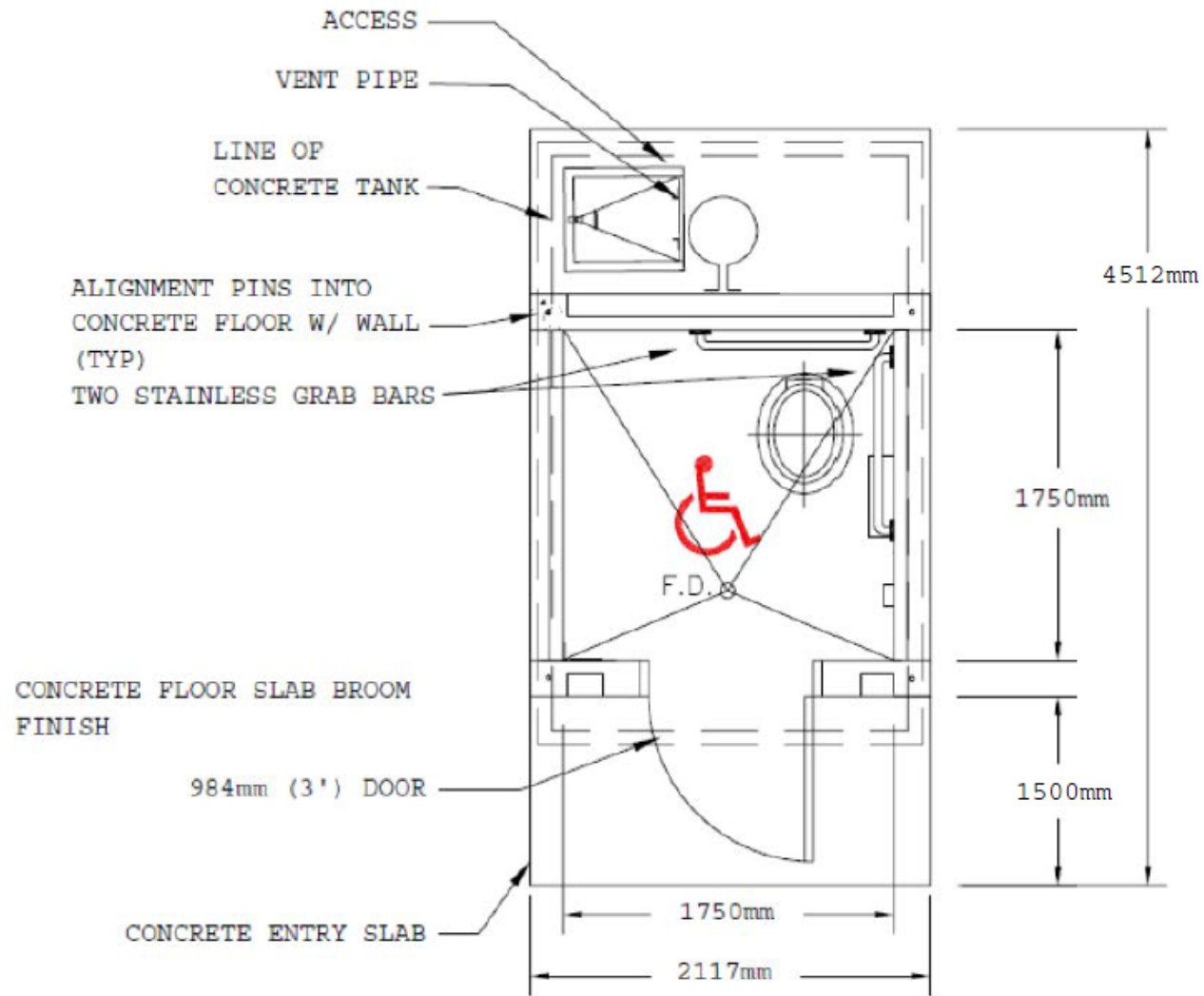


ANGLE









## GENERAL NOTES:

ALL ELEMENTS AND DIMENSIONS TO CSA STANDARDS B651-04 FOR BARRIER FREE WASHROOM.  
INTERIOR STALL DIMENSIONS SHOWN ON DRAWINGS ARE MINIMUM.

## PRECAST CONCRETE VAULT (TANK) & FLOOR:

DESIGN AND BUILT PRECAST, REINFORCED CONCRETE VAULT(S) AND SLABS TO EXTERIOR DIMENSIONS AND OPENINGS AS INDICATED.

VAULT IS TO CONTAIN HUMAN WASTES AND WILL BE SET ON A VARIETY OF SOIL TYPES AND CONDITIONS. PRODUCT SHALL BE MANUFACTURED & FINISHED TO MEET CAN/CSA A23.4/A251.

DESIGN AND BUILT FLOOR SLAB TO BE BROOM FINISHED.

THE BOTTOM OF THE VAULT SHALL BE SLOPED AT LEAST 5% WITH THE VAULT'S WALLS.

PRECAST VAULT SHALL BE DESIGNED TO CAN/CSA A23.4/A251-00 AND DESIGNED FOR A CORROSIVE AND SATURATED ENVIRONMENT TO RESIST WATER, ALKALINE, SALT AND HUMAN WASTE.

TANK SHALL BE FABRICATED AT OUR MANUFACTURING PLANT. CONCRETE SHALL BE MANUFACTURED WITH RHEOMAC® 300D CRYSTALLINE CAPILLARY WATERPROOFING ADMIXTURE.

ELEVATION AT TOP OF FLOOR SLAB TO BE AT LEAST 200mm ABOVE SURROUNDING GROUND SURFACE AND TO ENSURE POSITIVE DRAINAGE AWAY FROM THE NEW PUMPOUT UNIT.

## PRECAST WALL PANELS:

INTERIOR DIMENSIONS AS SHOWN ON DRAWINGS ARE MINIMUM.

PRECAST REINFORCED CONCRETE TO MEET OR EXCEED 40 Mpa.

CONCRETE VAULT AND SLABS TO EXTERIOR DIMENSIONS AND OPENINGS AS INDICATED.

DESIGNED FOR 4.8 kPa LIVE LOAD.

PRECAST CONCRETE WALL PANELS FINISH TO HAVE ARCHITECTURAL FINISH, CEDAR PANELS STYLES. PROVIDE SAMPLES TO PARKS FOR REVIEW AND APPROVAL.

EXTERIOR PAINT - CONCRETE PRIMER AND THREE COATS OF CUSTOMERS CHOICE.

INTERIOR PAINT - CONCRETE PRIMER AND THREE COATS OF WHITE.

## OTHERS:

ROOF: PRECAST CONCRETE ROOF, CUSTOMER SPECIFY FINISH  
DESIGN FACTORS: SNOW LOAD  $S_r=6.3$  kPa, RAIN LOAD  
 $S_r=0.3$  kPa.  
WIND LOAD  $\Rightarrow 200$  kph.

VENT PIPE: HIGH DENSITY POLYETHYLENE CORRUGATED EXTERIOR RIB WITH  
SMOOTH INTERIOR WALLS, 305mm DIA. TUBING, UV RESISTANCE  
WITH A MIN 2% CARBON BLACK ADDITIVE. DESIGN LOCATION OF  
HOLE IN FLOOR  
SLAB TO FIT LOCATION OF THE VENT PIPE.

TOILET RISER  
PER STALL: COMPLETE WITH FLIP-UP SEAT AND COVER - ALCARO PLASTIC

BUTYL JOINT  
SEALANT: CS-101 BUTYL RUBBER SEALANT - 25mm THICK  
OTHER ELEMENTS: REQUIRED TO ENCLOSE AND WATERPROOF THE COMPLETE  
SLAB/VAULT STRUCTURE.

### HARDWARE:

DOOR & FRAME: MIN. 1.5mm THICK PRESSED STEEL FRAME, DOOR  
SLAB. FRAME IS NOT A KNOCK DOWN FRAME.

PASSAGE LOCK: ON BARRIER FREE WASHROOM: BATHROOM/BEDROOM  
PRIVACY PASSAGE SET, BARRIER FREE LEVER  
HANDLES, SATIN NICKEL, ANSI A156.2 SERIES 4000  
GRADE 1, PRODUCT TO EQUAL SCHLAGE ND40-SERIES.

HINGES: 112 X 100 C26D, COMMERCIAL GRADE.

DOOR CLOSER: HEAVY DUTY DOOR CLOSER ON DOOR SLAB TO FRAME.  
SURFACE MOUNTED, UNIVERSAL, NON-HANDED  
APPLICATION, #4 SIZE FOR DOOR WEIGHING 121-187  
LBS. UL LISTED, BRONZE OR ALUMINUM FINISH.

HOOK: PROVIDE STAINLESS STEEL HOOK(S) NUMBER PER  
STALL AND MOUNT HEIGHT AS PER DRAWING.

BARRIER FREE  
GRAB BARS PER  
STALL: TWO EACH, 910mm LONG, 30-40mm DIA., 40mm  
CLEAR FROM WALL, SLIP RESISTANT. NOT ROTATE  
WITHIN FITTINGS, RESIST A FORCE OF 1.3 KN APPLIED  
IN ANY DIRECTION, STAINLESS STEEL.

DEAD BOLT: INSTALL OWNER SUPPLIED DEAD BOLT.

TOILET PAPER  
DISPENSER PER  
STALL: SUPPLY & INSTALL DOUBLE ROLL TOILET PAPER HOLDER.

CLOSER: SUPPLY & INSTALL SANITARY GEL DISPENSER AND HOLDER.

WASHROOM SIGNS: SUPPLY AND INSTALL PLASTIC UNISEX SIGNS, WHITE  
SYMBOLS WITH BLUE BACKGROUND.

### STONE VENEER TYPES:

SUPPLY & INSTALL MAN MADE CULTURED STONE - APPROVED BY OWNER